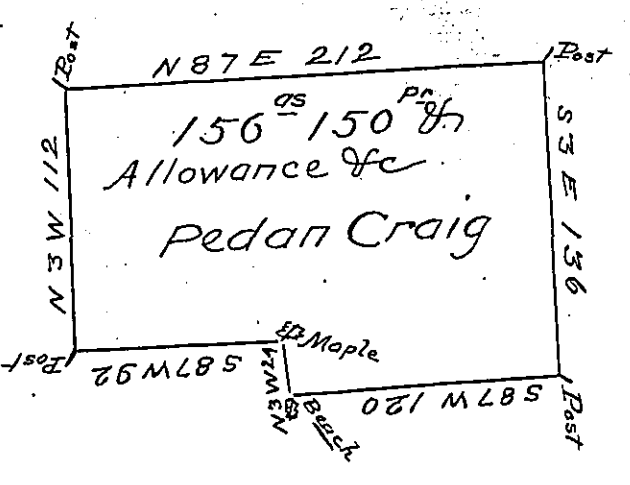


649-71  
John Millar

D-33-79

John Whitaker



Robert Moore

Robert Moore  
668-100

A draft of 156 <sup>95</sup> 150 <sup>87</sup> and allowance, situate in Wolfcreek Township, Mercer County, Surveyed 13<sup>th</sup> April 1819 to Pedan Craig, in pursuance of his Warrant, dated 8<sup>th</sup> December 1815,

Improvements, are a Cabbin house, Shingled Barn, and about thirty acres cleared and cultivated.

Allen Dunn D.S.

To Jacob Spangler Esq<sup>r</sup> }  
Surveyor Gen<sup>l</sup> }

IN TESTIMONY that the above is a copy of the original remaining on file in the Department of Internal Affairs of Pennsylvania, made conformably to an Act of Assembly approved the 16th day of February, 1833, I have hereunto set my Hand and caused the Seal of said Department to be affixed at Harrisburg, this sixteenth day of May 1904.

*James P. Brown*  
Secretary of Internal Affairs.